

WE INVITE YOU TO THE  
PRAGUE CONGRESS CENTRE

*Feel the change*



**PRAGUE**  
CONGRESS CENTRE

# DESTINATION

- ▶ Convenient location in the heart of Europe
- ▶ Excellent international connections
- ▶ Safe and relaxed environment
- ▶ UNESCO World Heritage Site
- ▶ Highly efficient public transport network



# GREAT DESTINATION ACCESSIBILITY

## ▶ INTERNATIONAL AIRPORT

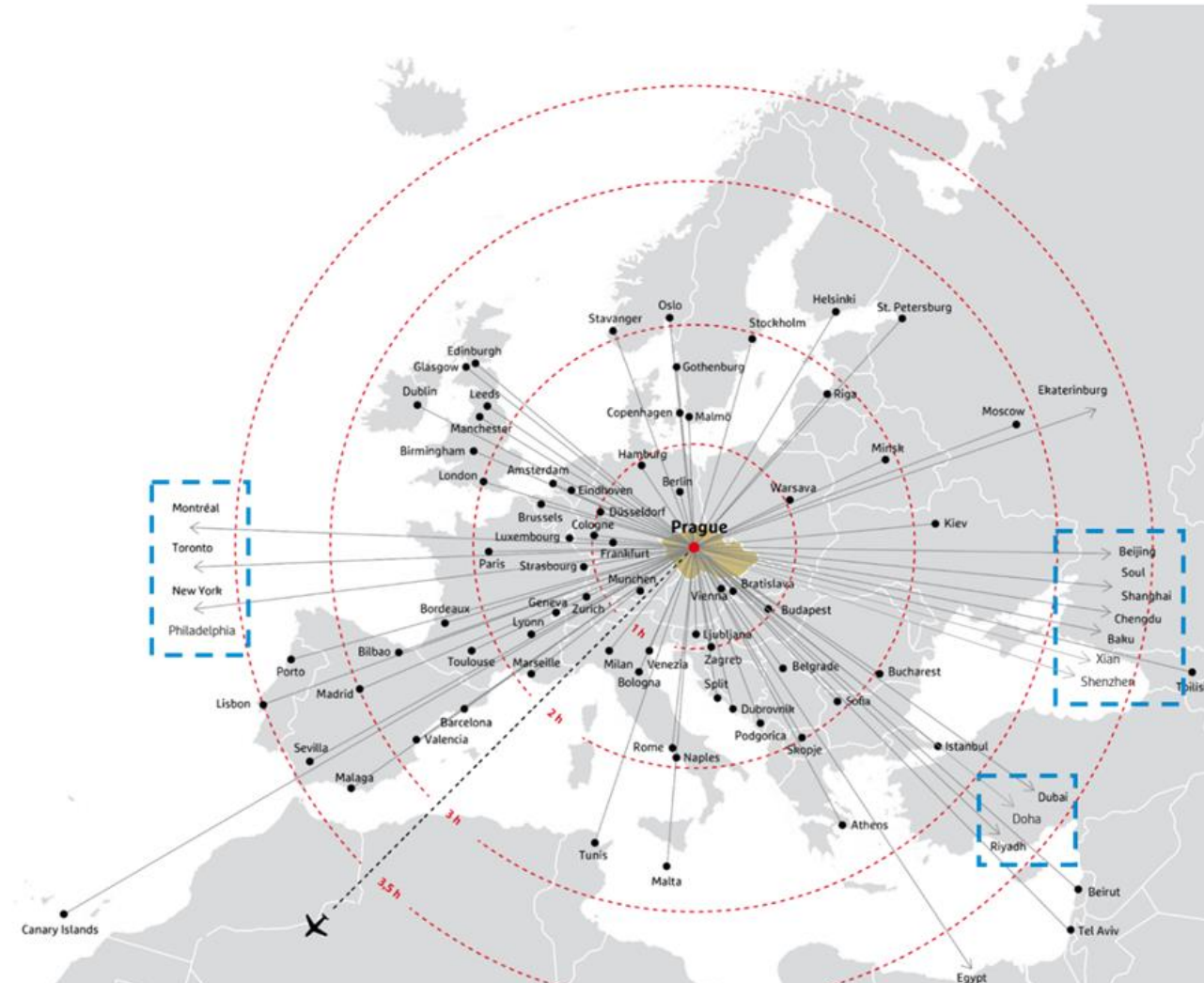
No visa requirements for citizens from 89 countries

## ▶ EUROPEAN UNION MEMBER

Schengen area member

## ▶ 162 SCHEDULED DESTINATIONS

Operated by 69 airlines



10th World's Safest Country in 2019  
(Global Peace Index)

World's 11th Best Travel Destination in 2019  
(TripAdvisor Traveler's Choice Awards)

# CITY MAP & PCC



One of the most efficient public transportation systems in Europe

PCC is directly next to a metro station, 2 stops away from the Wenceslas sq. and 10 minutes from the main railway station

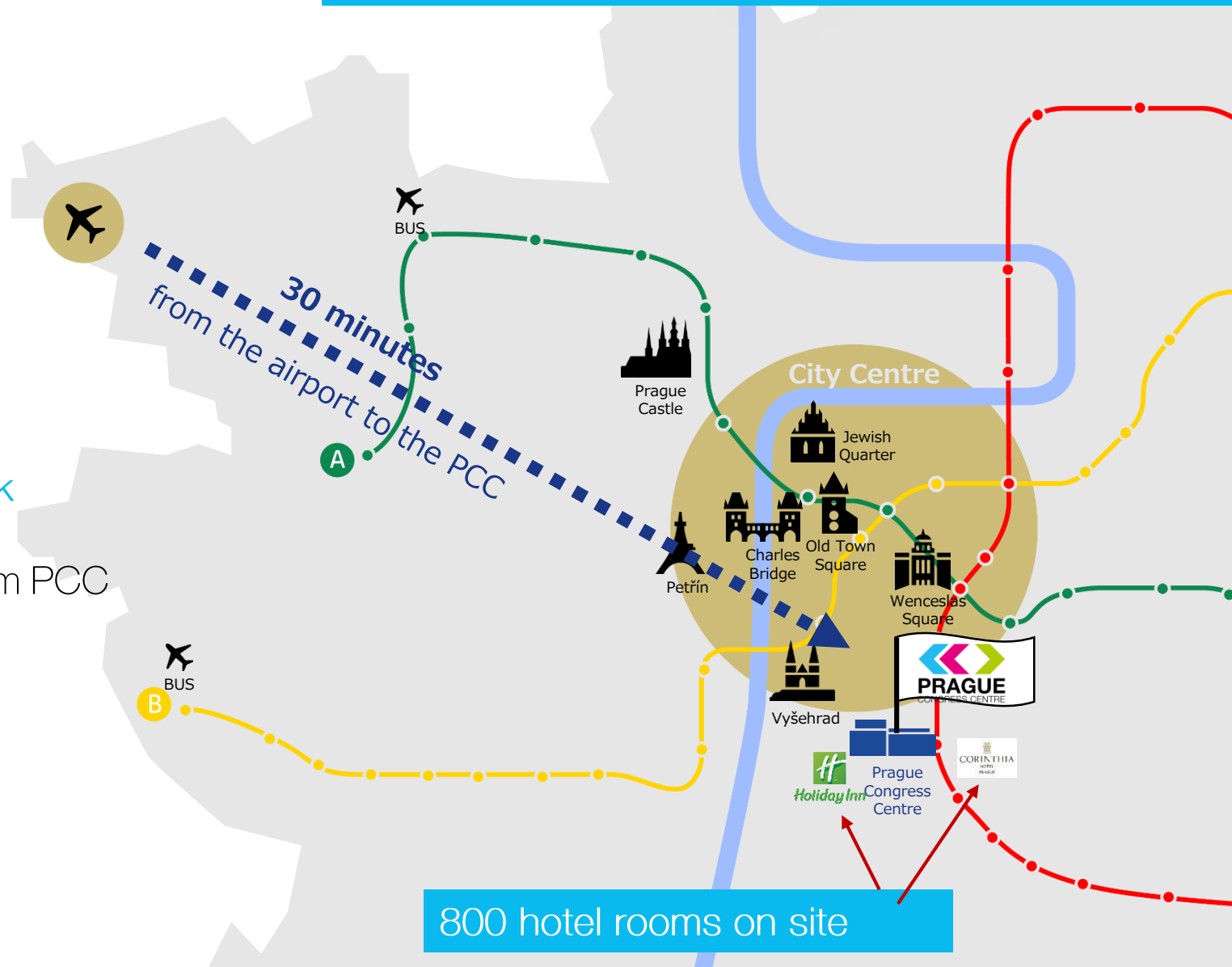


Over 800 rooms within 2 minutes' walk

3 000 hotel rooms within 10 minutes from PCC



Main tourist attractions within walking distance



800 hotel rooms on site

# LOCATION



# ACCOMMODATION

- ▶ Over 800 rooms within 2 minutes' walk
- ▶ 17 000 rooms within 20 minutes' travel
- ▶ Over 90 000 hotel beds in Prague
- ▶ Our own hotel Holiday Inn Prague Congress Centre with 254 rooms
- ▶ And nearby partner Corinthia Hotel Prague with 539 rooms

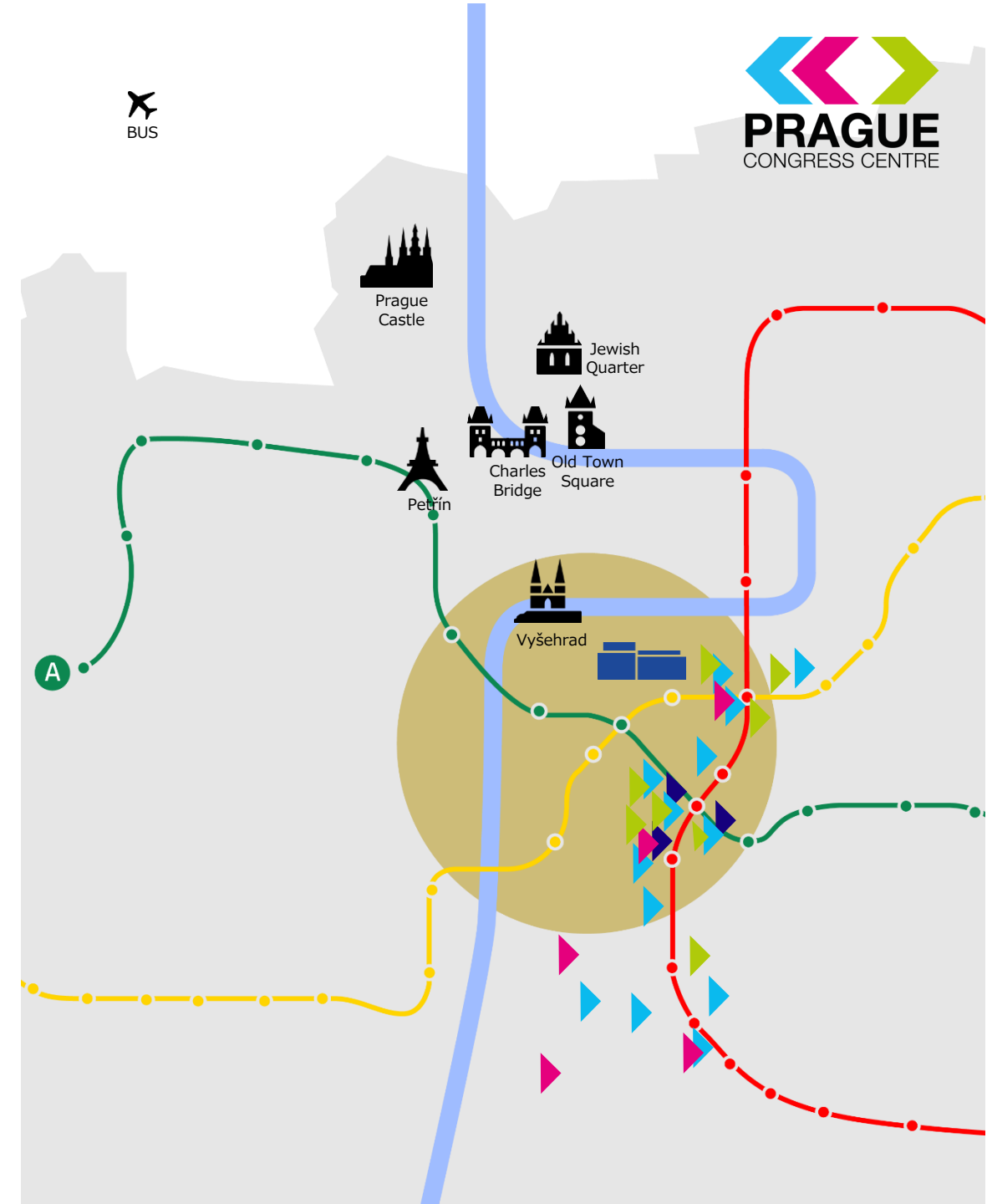


# ACCOMMODATION

- ▶ Prague offers in total almost 42 000 rooms at reasonable prices:

45	5*/Business hotels	> 175 \$	> 155 €	▶
213	4*/Business hotels	115–175 \$	100–150 €	▶
218	3* hotels	80–100 \$	70–100 €	▶
319	2* hotels, youth hostels and other	< 80 \$	< 70 €	▶

- ▶ More than 3 000 hotel rooms as well as youth hostels easily reachable by metro line C or tram within 10 minutes from PCC.



# DESTINATION SUPPORT

## FINANCIAL SUPPORT

- ▶ 400 CZK (15,7 EUR\*) per delegate up to 2 000 000 CZK (78,000 EUR\*)

e.g. 2 500 delegates

→ 39 216\* EUR

\* Based on current exchange rate

## FREE PUBLIC TRANSPORTATION

- ▶ Free public transportation passes for all delegates during the whole congress, worth 4,3 EUR per delegate per day

e.g. 2 500 delegates for 4 days, worth 43000 EUR\*

## OTHER

- ▶ Free city maps and informational brochures
- ▶ Promotional tools (pictures, destination video)
- ▶ SkyTeam Congress airfare by Alliance: 5–15% discount on flight tickets





# DESTINATION SUPPORT DETAILS

- ▶ The application deadline is closed for the 2020 events. Applications made from now on will be valid for 2021.
- ▶ Support is relevant to projects that are clearly beneficial for tourism outside of the historical centre of Prague or out of touristic season.
- ▶ **Eligible Costs** - rental (energy, AV technology, cleaning, security), promotion of the event locally and abroad
- ▶ **Not eligible Costs** - catering, refreshment, food, personal costs etc.
- ▶ **Who can apply?**
  - NGOs and other subjects that are registered in Czech Republic with a residence in Czech Republic.
  - The applicant must be also the organizer of the congress.Exceptionally, also organizer, who is not represented in the Czech Republic and does not have the residence here can apply.

## Two categories

1. Congress with more than 700 participants (400 CZK per person/2000 000 CZK/ 78 000 EUR in total)
2. Congress with less than 700 participants (300 CZK per person/209 700 CZK/8 223 EUR)

# THE VENUE

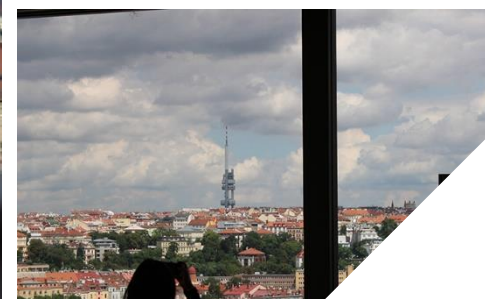
CZECH REPUBLIC | PRAGUE | PRAGUE CONGRESS CENTRE

- ▶ Opened in 1981
- ▶ 1995 joined stock company
- ▶ Newly refurbished 2017
- ▶ 1998–2000 construction of Holiday Inn hotel and offices



# VIEW

MAGNIFICENT VIEW FROM THE PRAGUE CONGRESS CENTRE

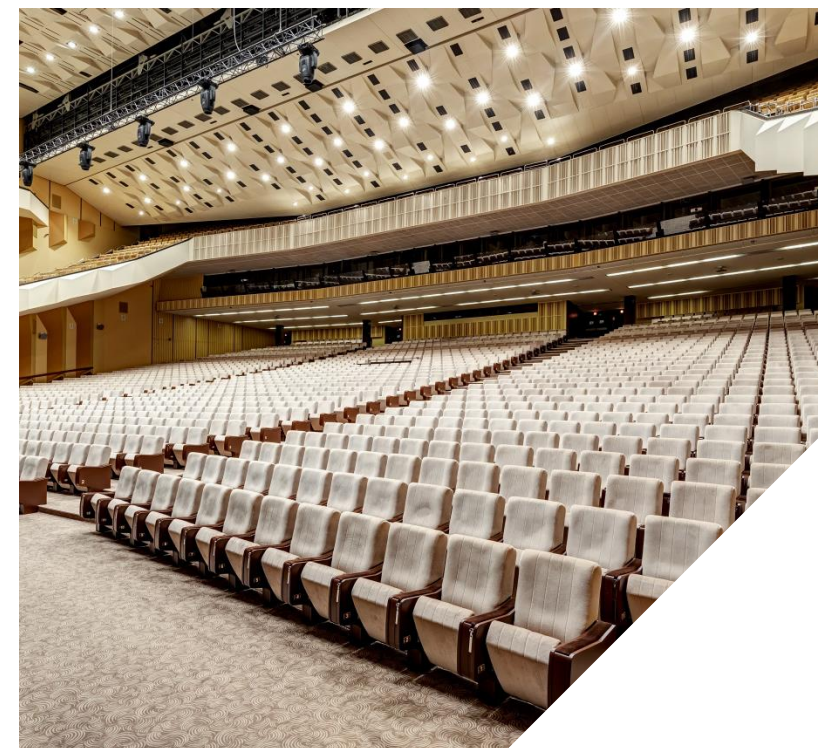


# CAPACITIES

## CONGRESS AND CONFERENCE CAPACITIES

- ▶ 20 halls
- ▶ 50 meeting rooms
- ▶ 13 000 m<sup>2</sup> exhibition space
- ▶ Capacity up to 10 000 persons

▶ SPACE	NUMBER	CAPACITY	TOTAL
▶ Large halls	2	1 034-2 764	3 798
▶ Mid-Size halls	8	150-500	2 990
▶ Small Halls	10	65-160	1 380
▶ Meeting Rooms	50	12-24	1 132
▶ TOTAL	70	10-2 764	9 300
Restaurant	2	500	



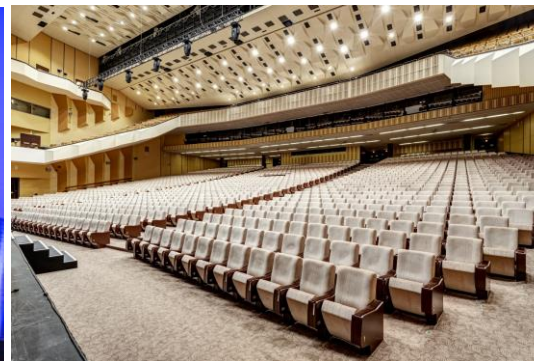
# THE CONGRESS HALL

A STAGE FOR WORLD

▶ Up to 2 764 seats

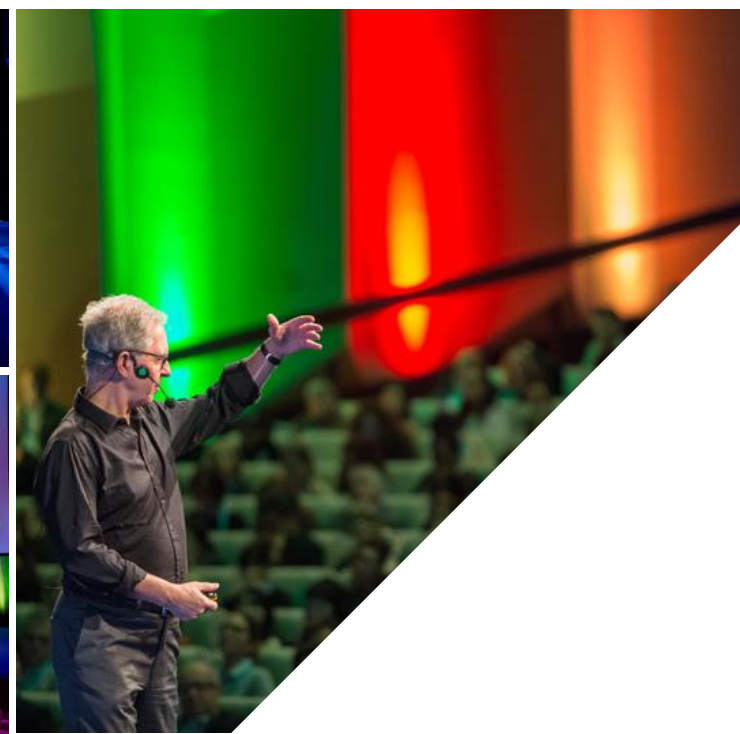
▶ 615 m<sup>2</sup> stage area

▶ Projection screens up to 20 × 8 m



# THE CONGRESS HALL

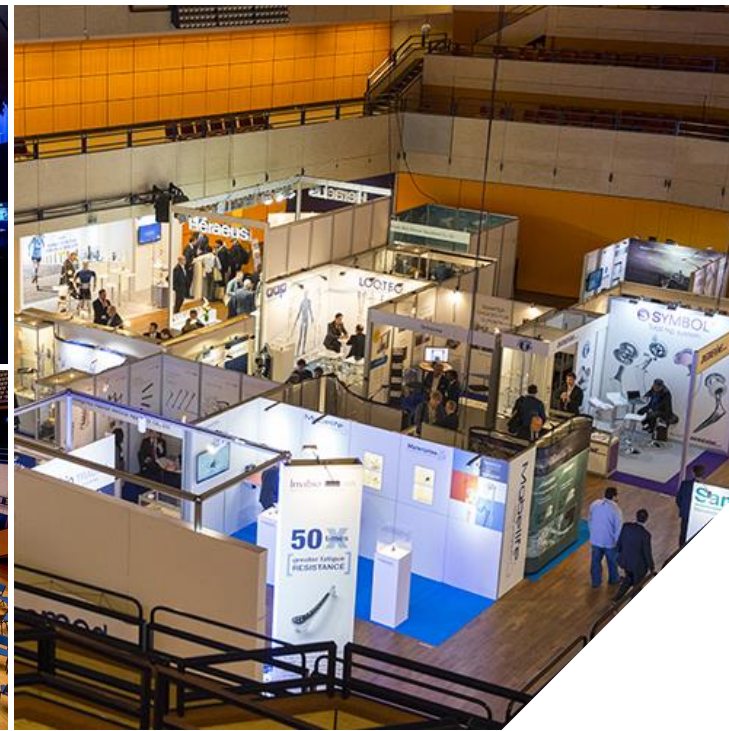
THE LARGEST CONGRESS HALL IN THE CZECH REPUBLIC



# THE FORUM HALL

PRESENT | PERFORM | DEBATE | DANCE

- ▶ Fully retractable seating and stage
- ▶ Capacity up to 1 034
- ▶ Up to 15 m headroom above stage



# THE FORUM HALL

MULTIFUNCTIONAL

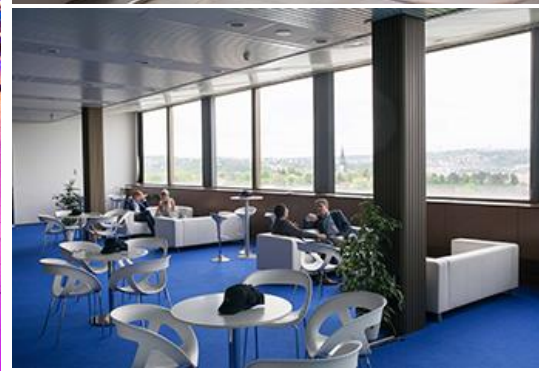
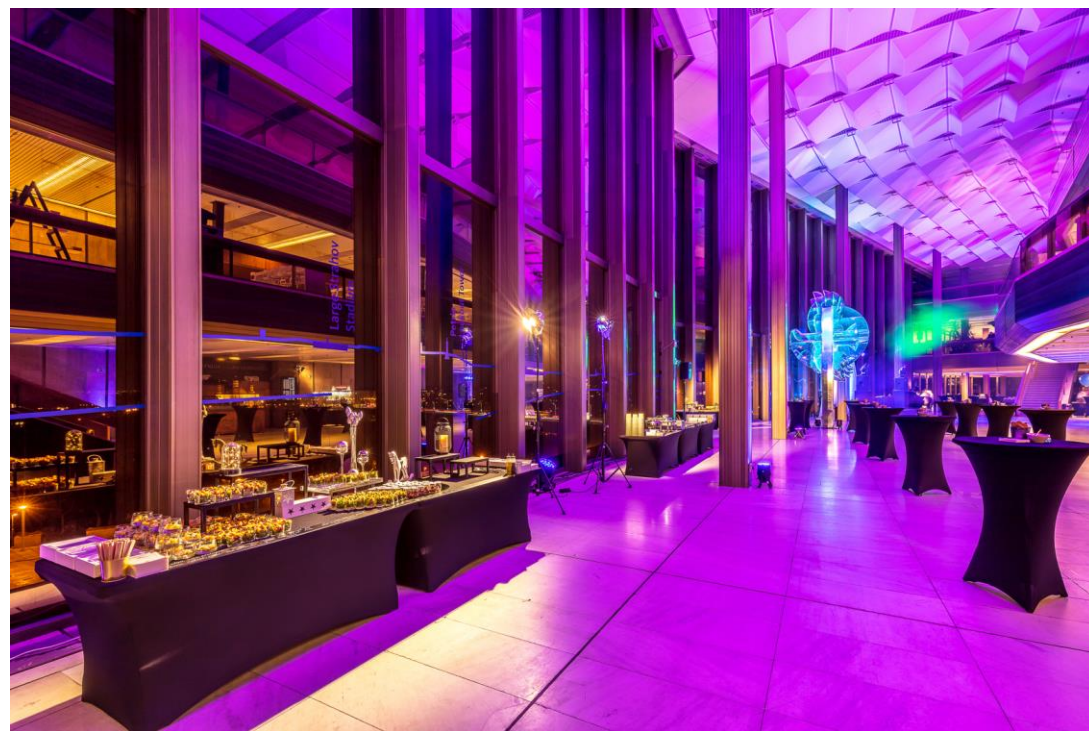




# FOYERS

## BREAK-OUT | EXHIBIT | SOCIALIZE

SPACE	NUMBER	TOTAL AREA	EXHIBITION AREA
▶ Foyer	16	17 063 m <sup>2</sup>	8 305 m <sup>2</sup>
▶ Halls and Clubs	17	6 811 m <sup>2</sup>	4 295 m <sup>2</sup>
▶ TOTAL	33	23 875 m <sup>2</sup>	13 000 m <sup>2</sup>



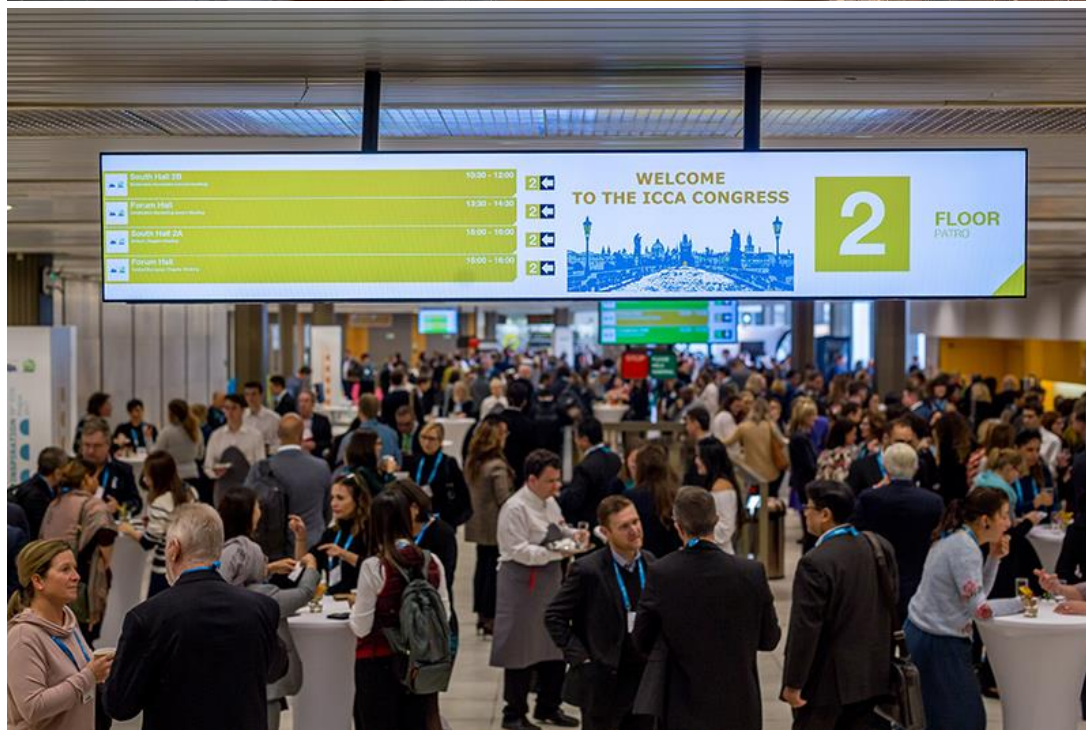
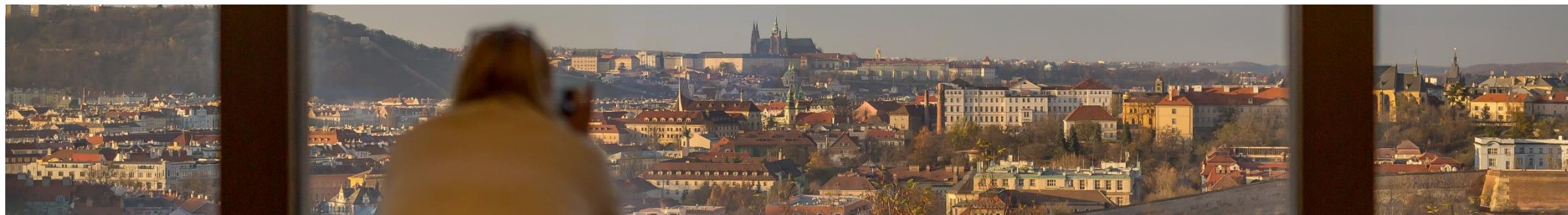
# FOYERS

BREAK-OUT | EXHIBIT | SOCIALIZE



# FOYERS

BREAK-OUT | EXHIBIT | SOCIALIZE

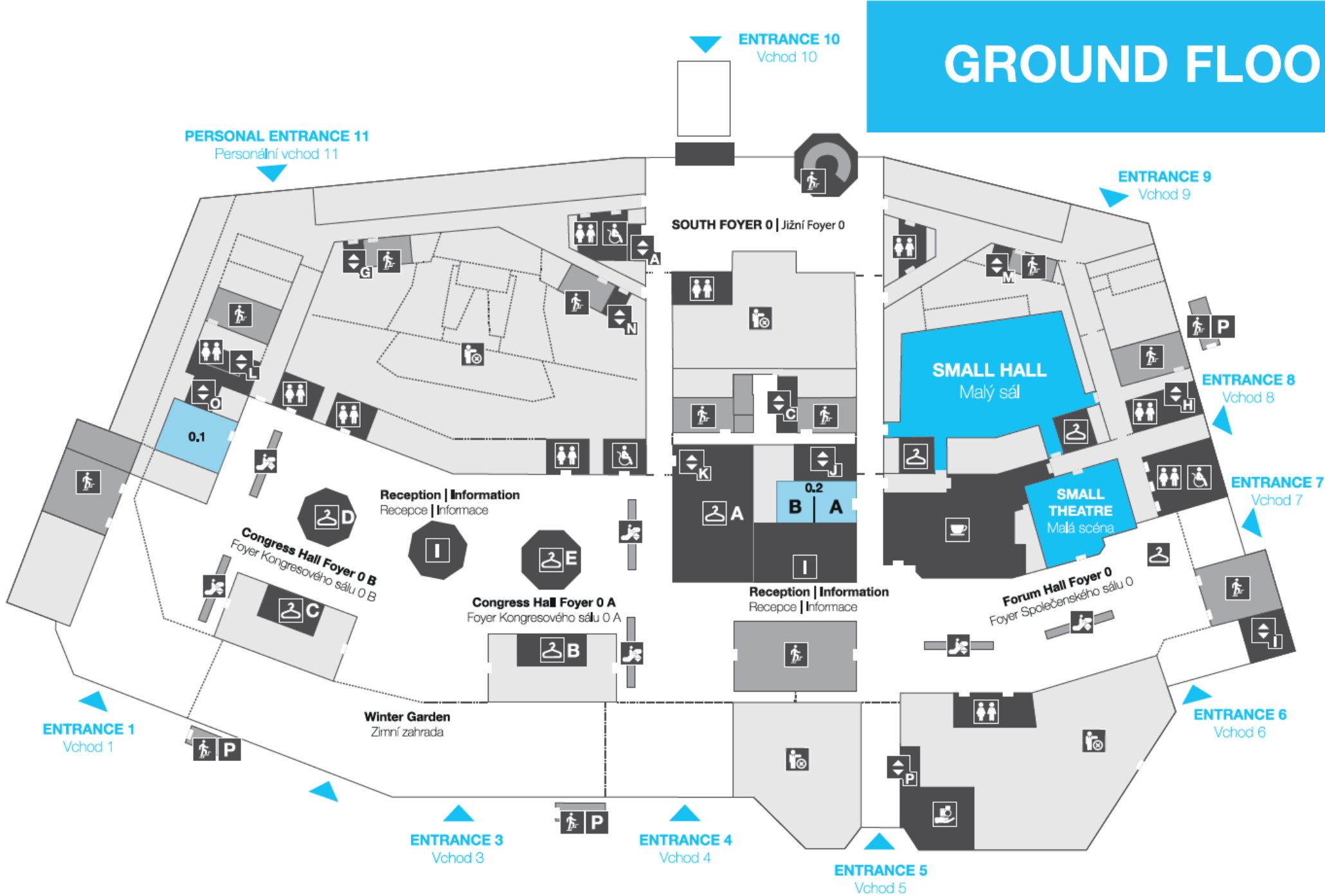


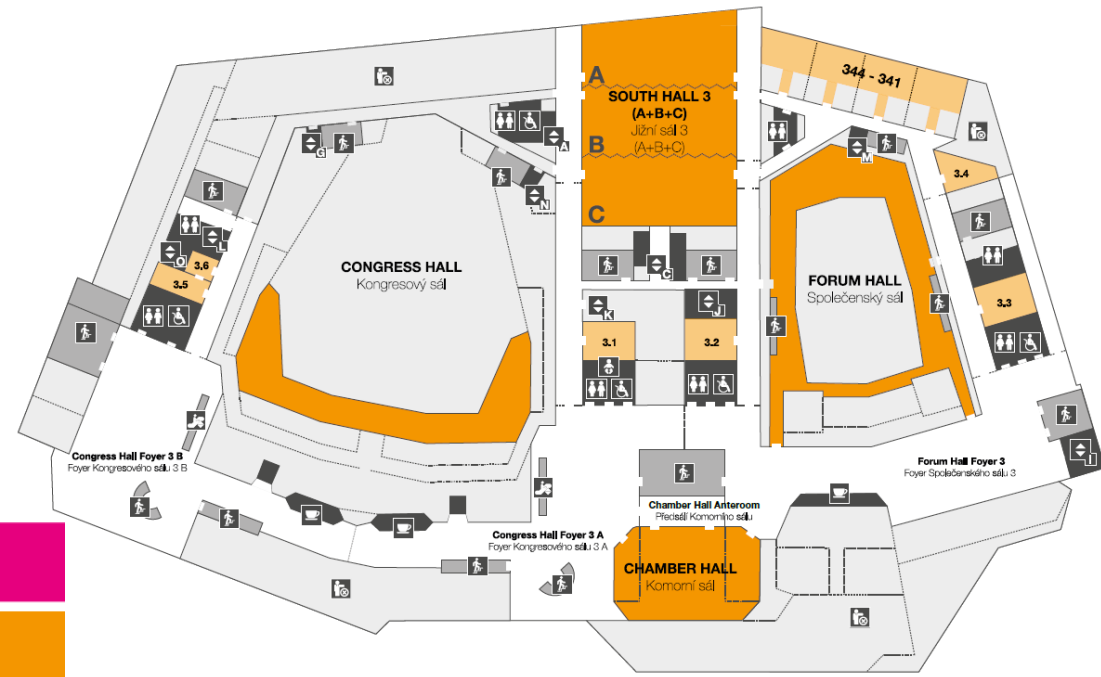
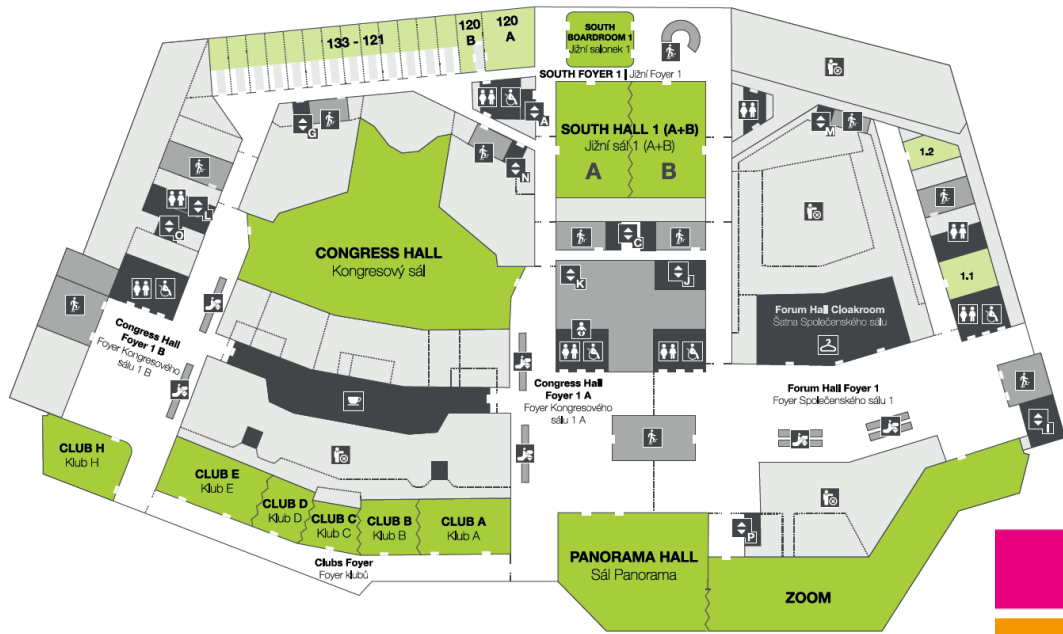
# CONFERENCE ROOMS

FUTURISTIC DESIGN



# GROUND FLOOR | Přízemí



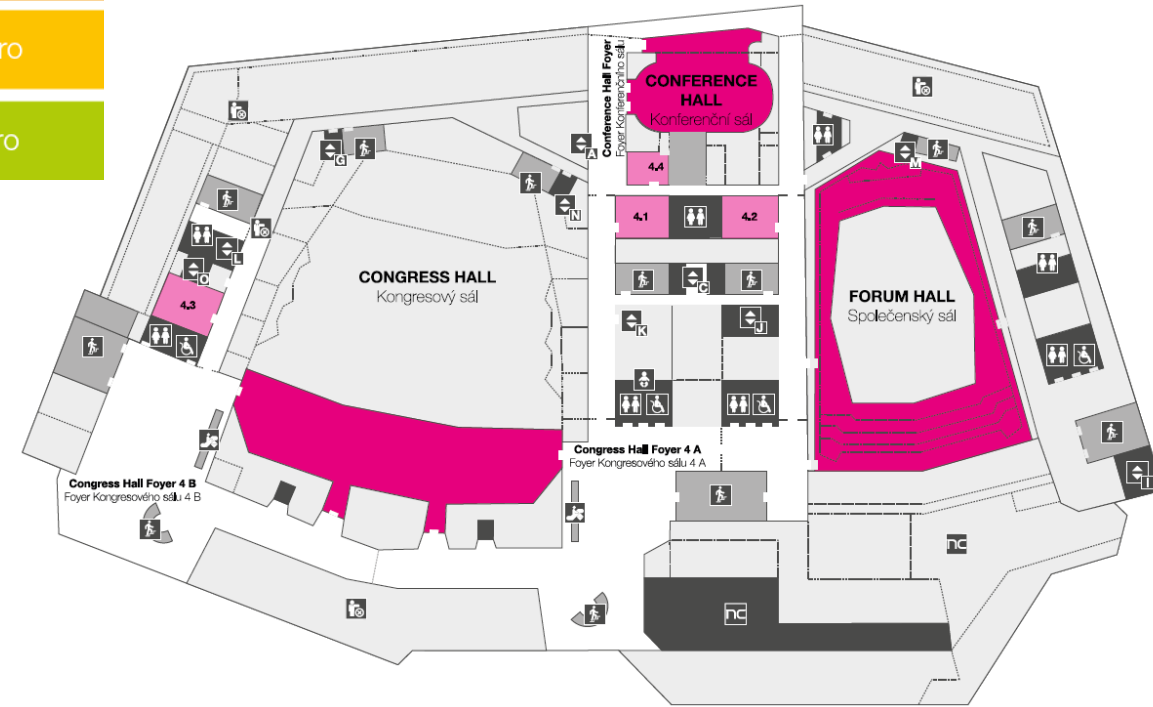
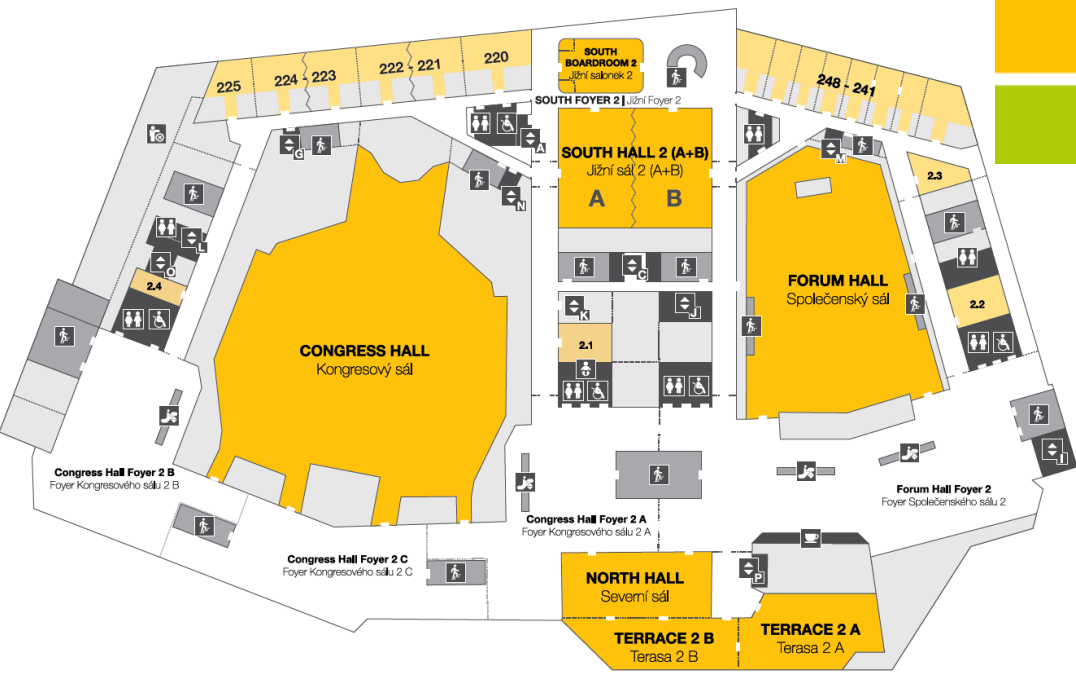


4TH FLOOR | 4. patro

3RD FLOOR | 3. patro

2ND FLOOR | 2. patro

1ST FLOOR | 1. patro



# SMART PCC

THE LATEST NOVELTIES IN AUDIO-VISUAL TECHNOLOGIES AND MORE

- ▶ Modern self check-in kiosks
- ▶ Holographic technology, videomapping
- ▶ App for invitation cards creation
- ▶ Laser projection up to 4K, live streaming online and inhouse to any flat screen
- ▶ Complex solution for electronic content maintenance, digital navigation system with over 190 flat screens
- ▶ Mobile application for inhouse navigation
- ▶ New generation effect lights & dimming houselights in all rooms with capacity from 50 people
- ▶ More than 300 wi-fi access points



# ZÁTIŠÍ CATERING

SIMPLE MEALS, FRESH PRODUCTS AND EFFICIENT SERVICE

- ▶ Your **congress or conference** will be enhanced by innovative and sustainable catering
- ▶ Coffee breaks, lunch boxes and ecological dishes are some of our specialties when **catering to a large number of people**
- ▶ Seeking for new **zero-waste catering** solutions such as reusable and compostable dinnerware, replacing plastic straws with pasta-made ones, careful planning to avoid excess food





# PCC GOES GREEN

- ▶ Investing 4,8mio EUR in modernisation of the central boiler room, reconstruction of air conditioning, instalation of design LED lamps, water-savers and EKO WC flushing and measurement and control systems

Resulted in environmental benefits per year:

Water saving: 11 533 m<sup>3</sup> = 3 Olympic pools

Energy saving: 9 740 945 kWh = annual consumption of 5013 households

Cleaner air: 726 tons of CO<sub>2</sub> = which would take one year for 33 456 trees to absorb

Annual total energy savings: 30%

- ▶ Zero waste catering joint project with Zátíší Catering - concept of community fridge for sharing pre-consumer food waste



# THE EXPERIENCE

A HISTORY OF SUCCESS HOSTING THE WORLD



- ▶ World summits
- ▶ International congresses
- ▶ Corporate and cultural events



Annual Meeting of the International Monetary Fund and the World Bank Group  
17 000 delegates



NATO North Atlantic Treaty Organization Summit  
10 000 delegates



Schneider Electric leadership Forum  
600 delegates



European presidency  
600 delegates



EAIE European Association for International education  
5 000 delegates



EFORT European Federation of National Associations of Orthopaedics and Traumatology  
6 500 delegates



HABITAT European Conference on Housing and Sustainable Urban Development  
4 000 delegates



WONCA World Organization of Family Doctors  
4 000 delegates



ESPGHAN European Society for Paediatric Gastroenterology Hepatology and Nutrition  
5 000 delegates



EUSEM European Society for Emergency Medicine  
2 500 delegates

# CULTURAL EVENTS

WE LIVE CULTURE

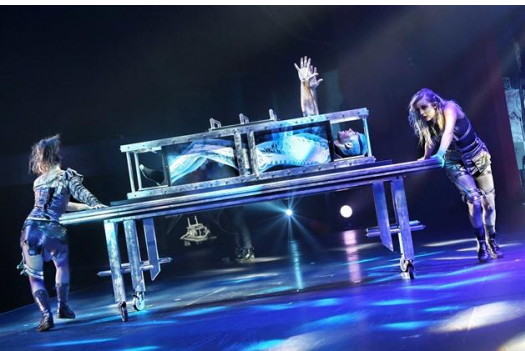
- ▶ Bobby Mc Ferrin
- ▶ Bonnie Tyler
- ▶ Brian May
- ▶ Buena Vista Social Club
- ▶ Diana Krall
- ▶ Gregorians
- ▶ Hugh Laurie
- ▶ Chris Rea
- ▶ Tony Bennett
- ▶ Tori Amos
- ▶ Joe Bonamassa
- ▶ Mamma Mia! musical
- ▶ Mirelle Mathieu
- ▶ Paul Anka
- ▶ Ringo Starr
- ▶ Smokie
- ▶ Sting
- ▶ Yes
- ▶ Woody Allen and His New Orleans Jazz Band
- ▶ Yamatto



# OTHER EVENTS

## LIVE ENTERTAINMENT

- ▶ Czech National Aerobic Championship
- ▶ Snooker Exhibition
- ▶ Thai Box Exhibition
- ▶ Chinese National Circus
- ▶ Shaolin
- ▶ Blue Man Group
- ▶ Illusionists



# CERTIFICATES & AWARDS



# NEW EXHIBITION HALL

2017 INTERNATIONAL ARCHITECTURE COMPETITION

WINNER: OCA ARCHITECTS, BARCELONA, SPAIN



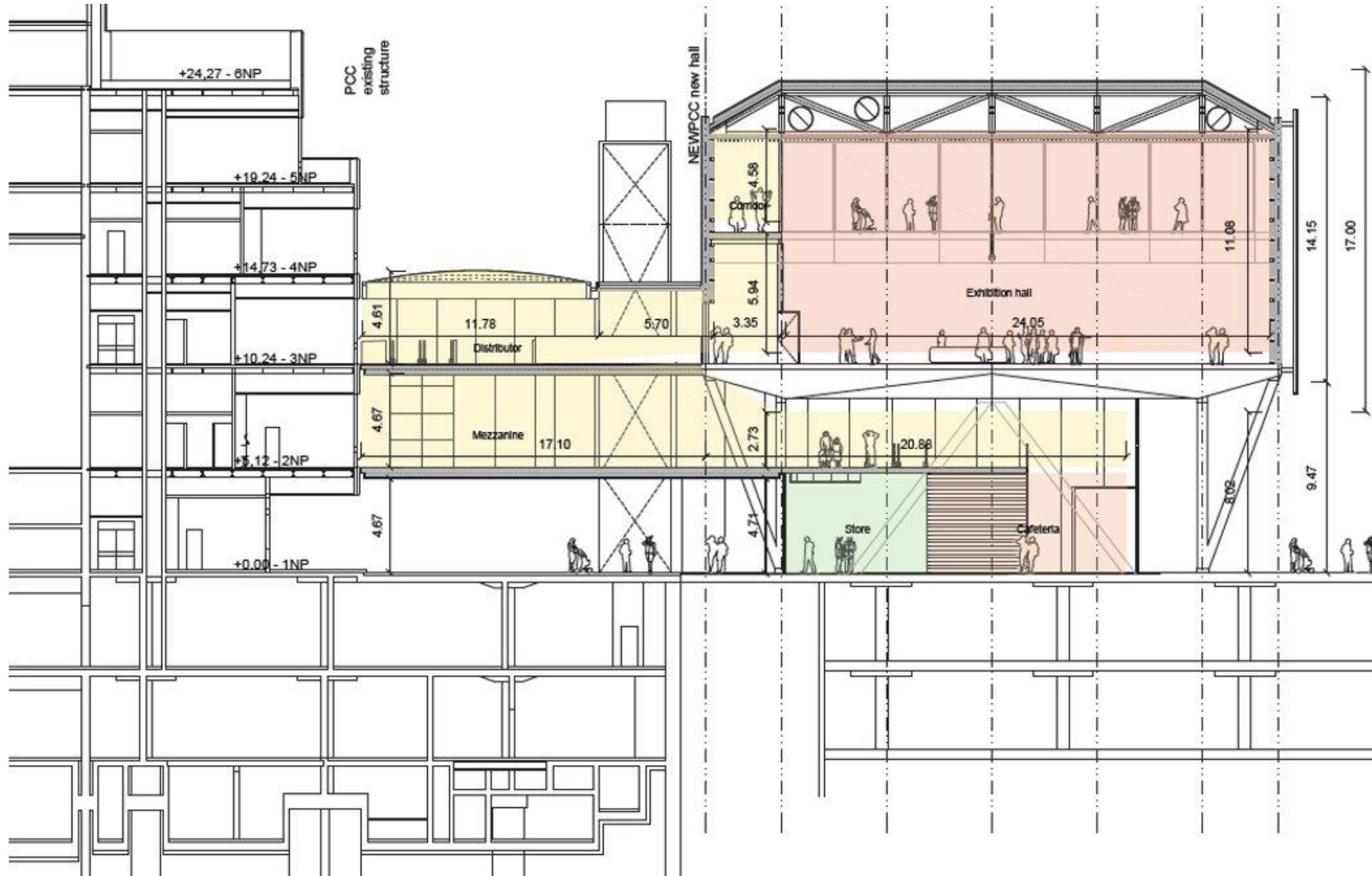






# EXHIBITION HALL

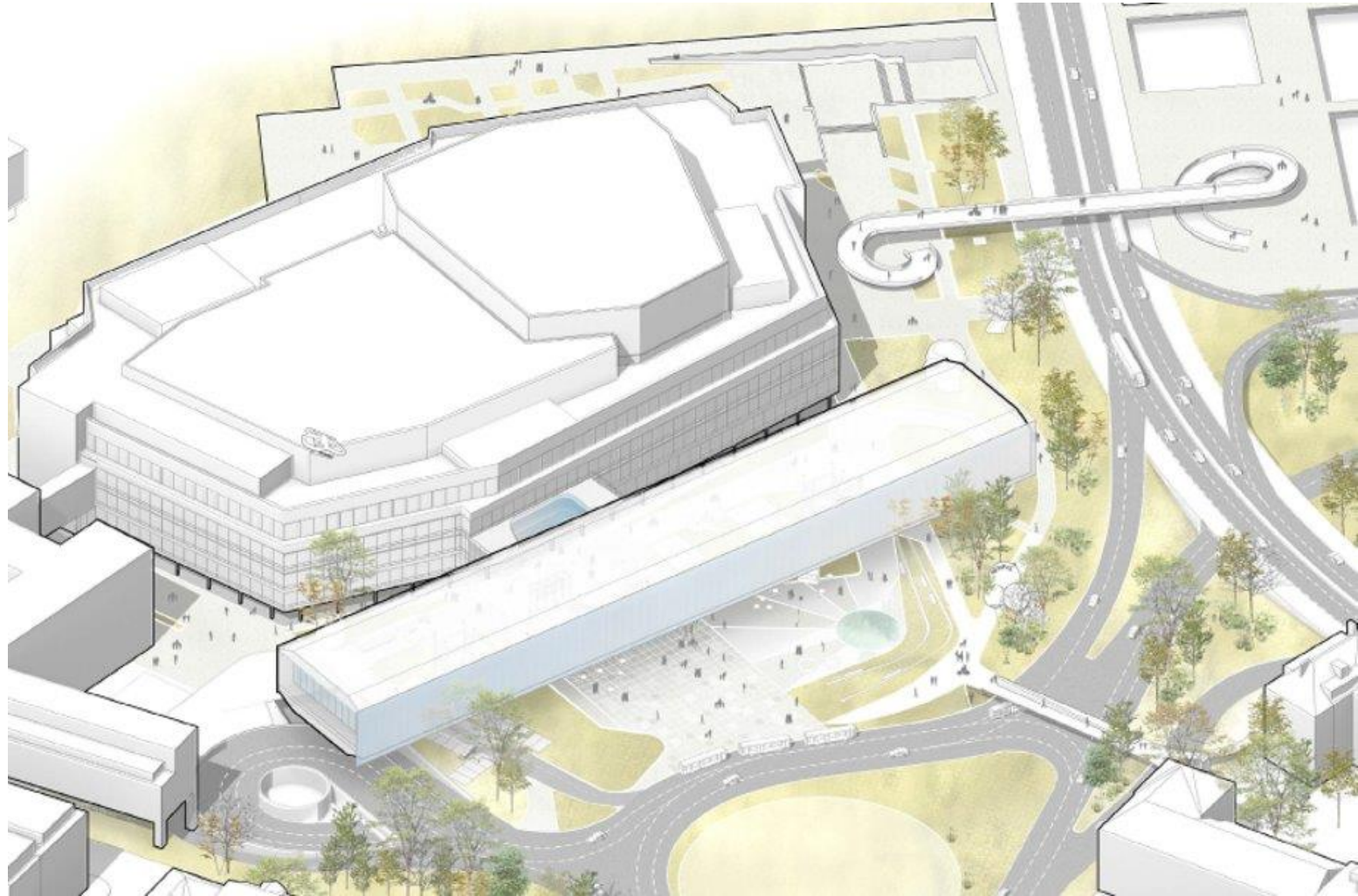
## CONNECTION TO CURRENT BUILDING



# EXHIBITION HALL

## THE NEW PCC

- ▶ The new PCC relates to the surroundings gathering people from the south, north and the metro station to a big cluster space between the existing building and the new PCC
- ▶ New PCC will be a sustainable landmark floating above a new urban park



# NEW EXHIBITION HALL

PROJECT 2019-2022



- ▶ 5 000 m2 Net Exhibition Space
- ▶ Multifunctional
- ▶ Sustainable

# NEW EXHIBITION HALL

## PROJECT 2019-2022

This project will not affect your event at the PCC as it is a separate building

- No dust
- No security issues
- No noise





*Feel the change*

